



US 20040262711A1

(19) **United States**

(12) **Patent Application Publication** (10) **Pub. No.: US 2004/0262711 A1**

**Shen**

(43) **Pub. Date:**

**Dec. 30, 2004**

(54) **FUSED PASSIVE ORGANIC LIGHT  
EMITTING DISPLAYS**

**Publication Classification**

(76) **Inventor:** Zilan Shen, West Windsor, NJ (US)

(51) **Int. Cl.<sup>7</sup>** ..... **H01L 29/00**; H01L 23/58;  
H01L 31/12; H01L 27/15

Correspondence Address:  
**TROP PRUNER & HU, PC**  
**8554 KATY FREEWAY**  
**SUITE 100**  
**HOUSTON, TX 77024 (US)**

(52) **U.S. Cl.** ..... **257/529**; 257/665; 257/81;  
257/79

(57) **ABSTRACT**

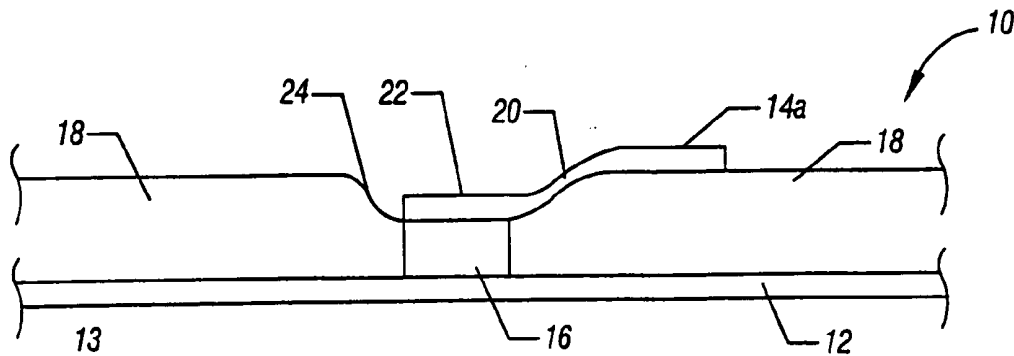
(21) **Appl. No.:** **10/900,916**

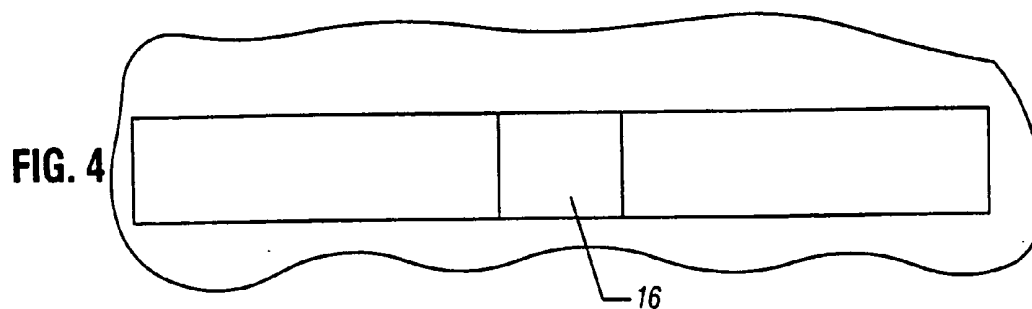
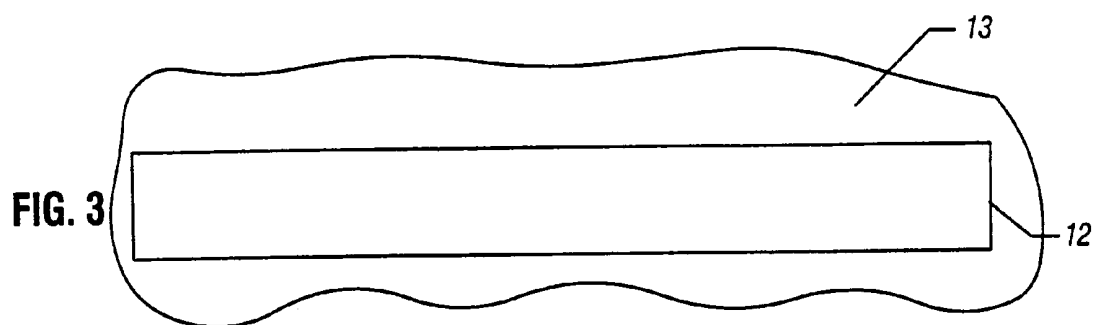
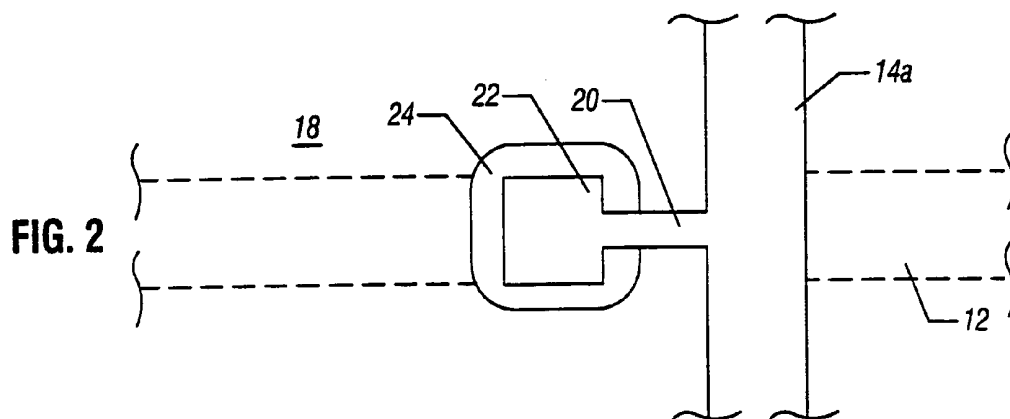
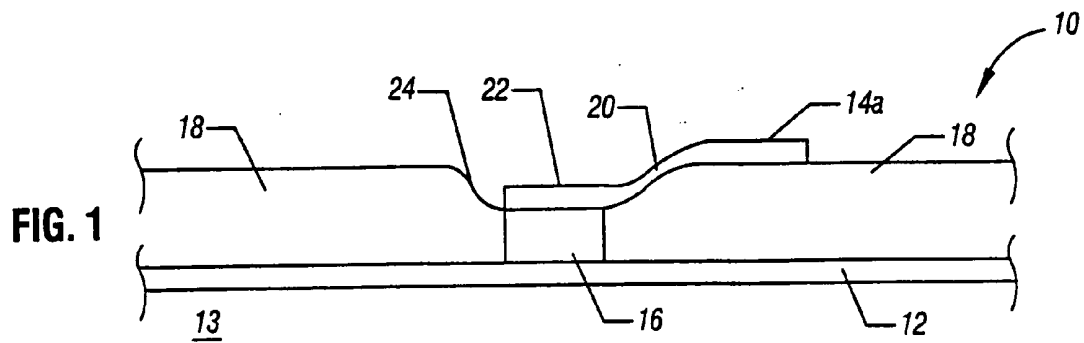
An organic light emitting device display may include transverse row and column lines. In a passively driven OLED display, a fuse may be positioned between the OLED material and the row electrode. When a short occurs, the single pixel may be separated from the circuit by the fuse, avoiding the possibility that an entire row of pixels may be adversely affected by the short associated with one single pixel along a row.

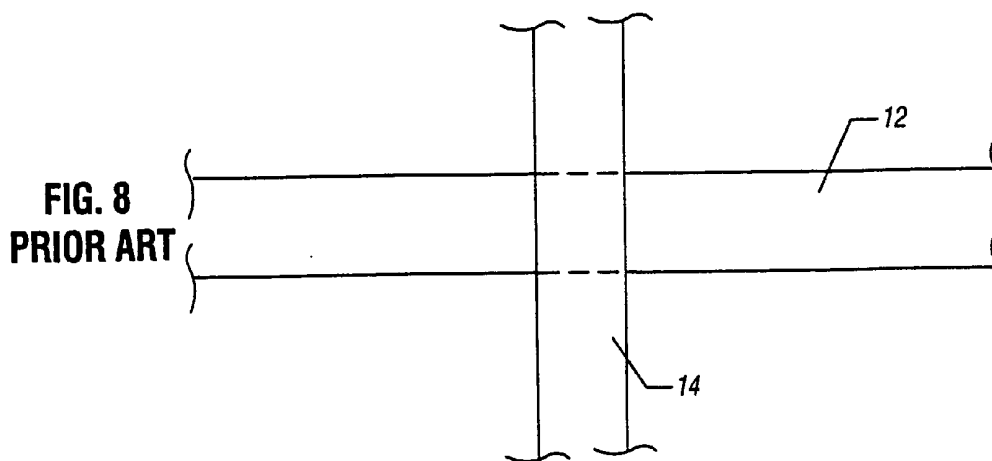
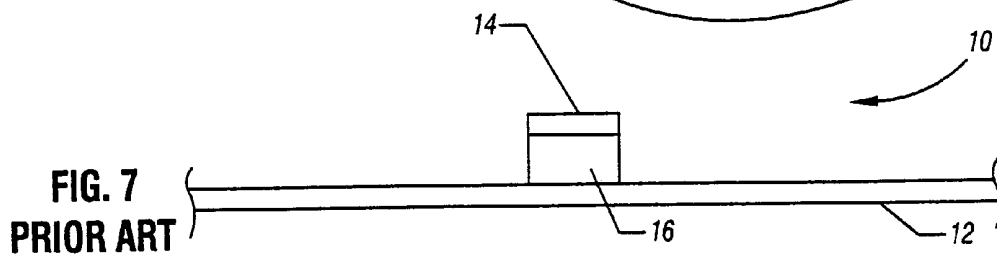
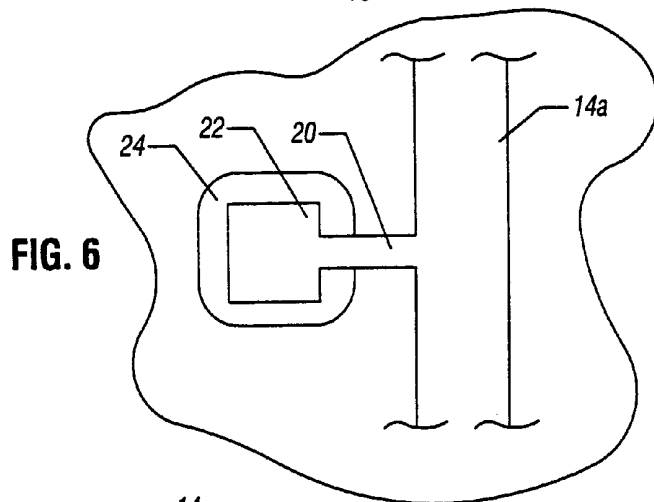
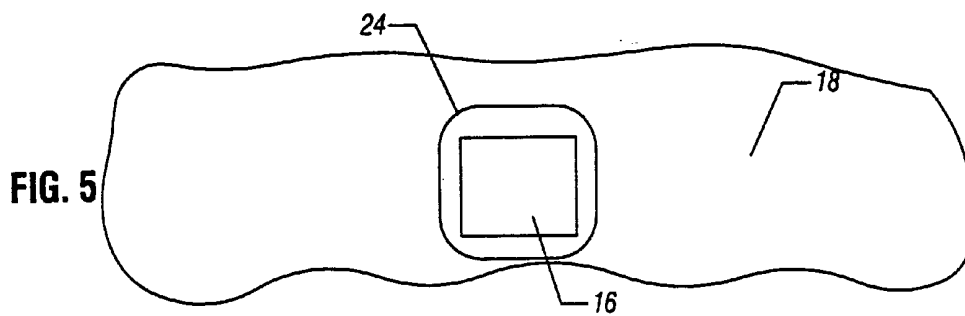
(22) **Filed:** **Jul. 28, 2004**

**Related U.S. Application Data**

(62) Division of application No. 09/904,237, filed on Jul. 12, 2001, now Pat. No. 6,791,114.







## FUSED PASSIVE ORGANIC LIGHT EMITTING DISPLAYS

### BACKGROUND

[0001] This invention relates generally to passive, organic light emitting device displays.

[0002] Organic light emitting device (OLED) displays offer the potential for bright, three-color displays for various applications. OLEDs emit light when current flows through the OLED material.

[0003] Two driving schemes are used to drive OLED displays. In an active driving scheme, transistors, such as thin film transistors, may be used to individually control the brightness of each pixel. In this scheme, a single pixel short results in a dark spot in a display that may be unnoticeable by human eyes. Due to the requirement of the OLED, crystalline silicon or high temperature polysilicon thin film transistors are usually used as controlling devices on the back plane of the display. These thin film transistors may add a relatively substantial cost to the display.

[0004] Work is ongoing to improve the performance of low temperature polysilicon and amorphous silicon based transistors. However, a cost-effective method for OLED displays is still not widely available.

[0005] Passively driven displays, on the other hand, provide a simple and cost-effective solution for small area OLED displays. With the development of tiling techniques, large area, cost-effective OLED displays become a possibility. With large area OLED displays, OLED pixels within each tile may be passively driven.

[0006] Since OLED devices are very thin (on the order of several hundred Angstroms), pixel shorts may occur. With local, passive matrix schemes, one shorted OLED pixel can take out an entire row and/or column that is associated with the short pixel.

[0007] Generally, in passive displays, a line is driven one at a time. In one example, an entire row may be activated at one time and then each of the columns selectively activated to light pixels along the row. Thus, if one pixel goes bad, the optical characteristics of the entire row may be adversely affected.

[0008] Referring to FIGS. 7 and 8, a pixel may be made up of a metal row 14 that extends transversely to a transparent conductive column 12. Between the row 14 and column 12 is the OLED 16. As shown in FIG. 8, the OLED is sandwiched between transverse rows 14 and columns 12. Light is emitted through the column 12 which is transparent. Once the OLED pixel is shorted, the row 14 and the column 12 that connect to the pixel are both shorted.

[0009] Thus, there is a need for a way to reduce the adverse consequences of pixel shorting in passive OLED displays.

### BRIEF DESCRIPTION OF THE DRAWINGS

[0010] FIG. 1 is a greatly enlarged cross-sectional view in accordance with one embodiment of the present invention;

[0011] FIG. 2 is a top plan view of the embodiment shown in FIG. 1;

[0012] FIGS. 3 through 6 show a process of forming the devices shown in FIGS. 1 and 2 in accordance with one embodiment of the present invention;

[0013] FIG. 7 is a greatly enlarged cross-sectional view in accordance with the prior art; and

[0014] FIG. 8 is a top plan view of the embodiment shown in FIG. 7.

### DETAILED DESCRIPTION

[0015] A pixel of an organic light emitting device (OLED) display 10 includes a transparent column electrode 12 and a transverse row electrode 14a as indicated in FIG. 1. In some cases, the column electrode 12 is made of indium tin oxide (ITO) so that light emitted by the OLED material 16 passes outwardly through the column 12. The row electrode 14a is coupled by a thin region or fuse 20 to a contact 22 on one surface of the OLED material 16. An insulator 18 may be provided to separate the row electrode 14a from the column electrode 12. A depression 24 may be formed in the insulation 18 to create an opening to contact the OLED material 16 in one embodiment.

[0016] Referring to FIG. 2, the fuse 20 is an extension from the row electrode 14a that extends downwardly to an enlarged contact 22 in the opening 24. In some embodiments by offsetting the row electrode 14a upwardly with respect to the OLED material 16, the fuse 20 may be provided without substantially increasing the footprint or space required for each pixel of the display 10.

[0017] Conventionally, the row electrode 14a is made of a metal such as aluminum. The fuse 20 may utilize the electron migration behavior of thin film metal interconnection lines. For example, for an 80 nanometer thick aluminum line, the electron migration limit is about 10 milliamps per micron. If the current density in the thin metal fuse 20 is higher than the electron migration limit, local heating occurs, causing the fuse 20 to burn out. Therefore, the electron migration limit can be used to form a fuse such that when the current exceeds the electron migration limit, the fuse burns out, stopping the current flow.

[0018] In some embodiments, the insulator 18 prevents shorts between the row and column electrodes 14a and 12 while also defining the OLED pixel. The insulator 18 may be, for example, oxide or nitride material. The width of the fuse 20 may be designed so that it does not add too much resistance when the OLED pixel functions properly.

[0019] For example, for a 40 row display, a 100 micron by 100 micron OLED pixel may use about 10 volts and 10 milliamps peak current to produce constant brightness of about 100 candelas in one embodiment. The resistance of the fuse 20 may be as much as about 1 ohm without disturbing the circuit's function. Since the resistance of the row 14 is about 0.06 ohms per square centimeter, a 20 micron long, 10 micron wide fuse adds about 0.1 ohms to the circuit. When the OLED is shorted, the current on the fuse is about 10 volts per 0.3 ohms or 100 amps. The electron migration limit for a 10 micron line is about 100 milliamps which is much less than 100 amps.

[0020] Therefore, when an OLED pixel is shorted, the current passing through the fuse 20 is large enough to cause the electron migration limit to be exceeded, thereby burning

open the fuse **20**. As a result, the shorted OLED pixel is then disconnected from the driving circuit formed by the row and column lines. This shorted OLED pixel causes only one dark spot in the display **10**. This single dark spot may be much less noticeable than adversely affecting an entire row.

[0021] Referring to **FIG. 3**, initially, the columns **12** may be deposited and defined on a substrate **13**. The columns **12** may be made of a transparent conductor, usually indium tin oxide (ITO). The substrate **13** may be made of glass or other transparent material. Next the OLED material **16** may be deposited and defined as shown in **FIG. 4**. The OLED material **16** may be surrounded by an insulator material **18**, as shown in **FIG. 5**. Finally, the row electrode **14a** may be deposited and defined to include the fuse **20** and contact **22**, as shown in **FIG. 6**.

[0022] While the present invention has been described with respect to a limited number of embodiments, those skilled in the art will appreciate numerous modifications and variations therefrom. It is intended that the appended claims cover all such modifications and variations as fall within the true spirit and scope of this present invention.

What is claimed is:

**1-10.** (Cancelled)

**11.** A method comprising:

depositing a first electrode;

providing insulating material over said first electrode;

providing a transverse electrode over said insulating material;

providing a light emitting material over said first electrode; and

coupling said second electrode to said light emitting material via a fuse.

**12.** The method of claim 11 including forming an extension from said second electrode that contacts said light emitting material and provides said fuse.

**13.** The method of claim 12 including providing a reduced width section between said light emitting material and said second electrode to act as said fuse.

**14.** The method of claim 11 including designing the fuse so that it fails when the current density exceeds its electron migration limit.

**15.** The method of claim 11 including forming an opening in said insulating material and providing a contact to said second electrode.

**16.** The method of claim 11 including offsetting said second electrode from said light emitting material.

**17.** The method of claim 11 including forming said fuse so it extends downwardly toward said light emitting material.

**18-25.** (Cancelled)

\* \* \* \* \*

专利名称(译)	熔融无源有机发光显示器		
公开(公告)号	<a href="#">US20040262711A1</a>	公开(公告)日	2004-12-30
申请号	US10/900916	申请日	2004-07-28
[标]申请(专利权)人(译)	沉紫蓝		
申请(专利权)人(译)	沉紫蓝		
当前申请(专利权)人(译)	英特尔公司		
[标]发明人	SHEN ZILAN		
发明人	SHEN, ZILAN		
IPC分类号	H01L27/32 H01L51/52 H01L29/00 H01L23/58 H01L31/12 H01L27/15		
CPC分类号	H01L27/3288 Y10S257/904		
其他公开文献	US7192793		
外部链接	<a href="#">Espacenet</a> <a href="#">USPTO</a>		

摘要(译)

有机发光装置显示器可包括横向行和列线。在被动驱动的OLED显示器中，熔丝可以位于OLED材料和行电极之间。当发生短路时，单个像素可以通过熔丝与电路分离，从而避免整行像素可能受到与沿着一行的单个像素相关联的短路的不利影响的可能性。

